

Subsite Loaner Request Form

Date: _____ Distributor if applicable: _____

This request confirms Customer agrees to send in equipment to Subsite for repair within 24 hours of receipt of the Loaner Equipment with a completed RA form.

 Customer Name: _____
 Ship To: _____

 Phone: _____
 E-mail: _____

Wear and tear items are not included with Loaners (i.e. tires, treads, cables etc.)

Please remove wear and tear items from your equipment prior to sending in for repair as you will need to use them with the Loaner.

 Serial # of repair sending in: _____ ***REQUIRED TO RECEIVE LOANER**

***SERIAL # IDENTIFICATION ASSISTANCE LOCATED ON THE OPPOSITE SIDE OF THIS FORM**

M/L CAMERA # OF PINS	<input type="checkbox"/>	6 PIN	<input type="checkbox"/>	4 PIN
TranStar Tractor	<input type="checkbox"/>	TILT UP CONN.	<input type="checkbox"/>	ELEVATOR
MINI CAMERA	<input type="checkbox"/>	1306	<input type="checkbox"/>	1545
			<input type="checkbox"/>	1545 W/ SONDE

OTHER TYPE LOANER: _____

MRA #: _____

Technician You Spoke With: _____

Please call Tech Support and talk to a technician prior to requesting a loaner so we have a clear understanding of what the problem is with your equipment. We also may be able to resolve the problem during that call.

California Tech Support 800-767-1974 / Kentucky Tech Support 866-769-8264

E-MAIL REQUEST TO: support-ca@subsite.com and/or support-ky@subsite.com

Any Loaner request(s) made after 2:00pm from California or Kentucky cannot be guaranteed to ship the same day

SUBSITE USE ONLY:

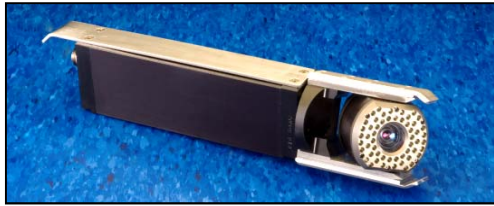
SUBSITE WILL RESPOND WHEN LOANER IS NOT AVAILABLE

SHIP DATE: _____

SALES ORDER: _____

LOANER S/N: _____

EQUIPMENT IDENTIFICATION ASSISTANCE



TRAKSTAR (RECTANGLE BODY)
SERIAL NUMBERS START WITH
C1C2 / C7B



TRAKSTAR II (SHORT SQUARE BODY)
SERIAL NUMBERS START WITH
C1E2



TRANSTAR
SERIAL NUMBERS START WITH
T8N / T8S / T9N / T9S / T9T / V2A



TRANSTAR II (SHORT BODY)
SERIAL NUMBERS START WITH
T9TXXXXX-V3 / T9U / V3A



1306
SERIAL NUMBERS START WITH
C3E



15XX SERIES
SERIAL NUMBERS START WITH
C3J / C3K / C3N / C3S



LATERAL LAUNCHER GEN 2
SERIAL NUMBERS START WITH
ZOOM CAMERA = C2D2
TRANSPORTER = D6M
1545 LAT W/SONDE CAMERA = C3S



MINI TRACTOR
SERIAL NUMBERS START WITH
D3B



OMNISTAR PROBE
SERIAL NUMBER START WITH
C1A2